

Panel Meter

AC Ammeter



Model:AM-96 AM-72 AM-48

Class:1.5

Specs:0.1A 0.5A 1A 1.5A 3A 5A 7.5A 10A 15A 20A 25A 30A 50A 75-105A(use Ext.CT 5A)

Note:for60/75/100A direct meter,the class is 2.5.

Advantage:The scale can be easily changed without opening the front frame so that the class will not be influenced.

DC Ammeter



Model:AM-96 AM-72 AM-48

Class:1.5

Specs:25uA 50uA 1mA 2mA 5mA 10mA 20mA 30mA 50mA 75mA 100mA 150mA 200mA 250mA 300mA 500mA 1A 3A 5A 7.5A 10A 20A 30A 50A 75-105A(used with Shunt)

Feature:The scale can be easily changed without opening the front frame so that the class will not be influenced.

AC Voltmeter



Model:AM-96 AM-72 AM-48

Class:1.5

Specs:30V 50V 75V 100V 120V 150V 250V 300V 450V 600V For 450-380KV,should be used with potential transformer secondary voltage 100V.

DC Voltmeter



Model:AM-96 AM-72 AM-48

Class:1.5

Specs:3V 5V 7.5V 10V 15V 20V 50V 75V 100V 120V 150V 200V 250V 300V 400V 450V 600V

Note:Over 600V should be used with Ext.Resistor.(Rated Cuuent 5mA).

MOVING COIL INSTRUMENTS FOR NONELECTRIC VALUES

Model:AM-96 AM-72

These meters can measure the other non-electric values for example,temperature,speed and so on.

Frequency Meter



Pointer Type

Model:AM-96 AM-72 AM-48

Class:1.0

Volt:50V 100V 220V 380V

Freq:44-55Hz 45-66Hz 55-65Hz 47-53Hz 57-63Hz 44-56Hz 54-66Hz 450-550Hz 550-650Hz



Panel Meter

POWER FACTOR

For 3 phases circuits,balanced load 45-65Hz and for 1 phase AC 50Hz.

Model:AM-96 AM-72

Class:2.5

Voltage:100V 380V 440V

Frequency:50Hz 60Hz

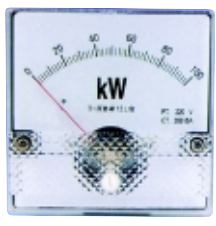
Scale graduation:0.5cap-1-0.5ind 0.3cap-1-0.7ind 0.4cap-1-0.4ind 0.7cap-1-0.3ind.

Orders to be Noted:

Type of Current:1P,3P 3W circuits,balanced load.

Rated Volt:The voltage is line voltage(between two wires).

Operating Current:If used with CT,the secondary current 5A or 1A is standard.



POWER METER

Wattmeters with built-in converter for 1 phase,3P 3W,3P 4W.

Model:AM-96 AM-72

Class:1.5

Voltage:50V 100V 220V 240V 220/380V 240/415V

Current:5a

These meters are used with potential secondary voltage 100V voltage transformer or secondary current 5A CT.wattmeters with built-in converter for 3P 3W,3P 4W and single phase.

MODEL:AM-96 AM-80 AM-72 AM-60 AM-50

Struction:Moving Coil,Moving Iron and Rectifier.

Class:2.0 2.5

Name	Specifications	Remarks
DC Ammeter	30-1000uA 1-1000mA 1K-10KA 1-50A	Direct connection With EXt.Shunt
DC Voltmeter	40-1000mV 1-1000V 1K-10KA 1-50A	Direct connection With EXt.Resistor
DC Ammeter	1-1000mA 5-1000A 1-50A 1K-0KA	Direct connection With EXt.CT
DC Voltmeter	40-1000mA 1-1000V 1K-380KV	Direct connection With EXt.CT
Frequency Meter	Voltage:50-380V Frequency:45-55Hz 45-65Hz 55-65Hz	
Power Factor Meter	Voltage:50-380V Frequency:0.5cap-1-0.5ind 0.3cap-1-0.7ind 0.4cap-1-0.4ind 0.7cap-1-0.3ind Suitable for 1Por 3P3W Circuit	Only AM-80 is available
Power Meter	Voltage:50-380V Current:0.2-5A With Current or Voltage Transformer	