

AM8 Series Moulded Case Circuit Breaker

1. Application

AM8 series MCCB is one of new products developed and manufactured by adopting international advanced technology. It is supplied with rated insulating voltage 690V and used for circuit of AC 50/60Hz, rated operating voltage AC 415V or below, rated operating current from 16A to 630A. It is designed for protection of electric circuit, motors, transformers and other equipments. The products conforms to IEC60947-2 standard.



AM8-160



AM8-250



AM8-400

2. Specification

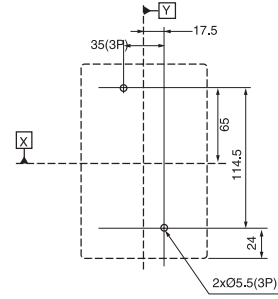
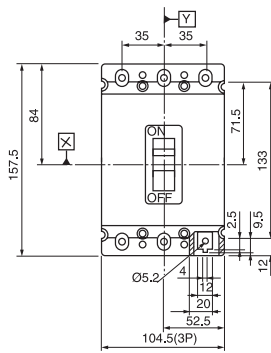
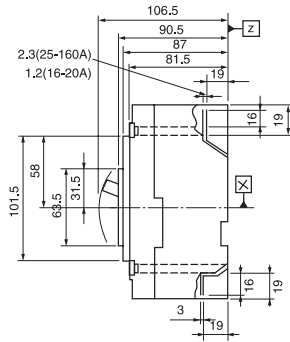
Type	AM8-160X	AM8-160	AM8-250	AM8-400	AM8-630
Poles number	3	3	3	3	3
Rated current In(A)	20~160A	50~160A	100~250A	200~400A	315~400A
Rated operating voltage Ue(V) AC 50/60Hz	690	690	690	690	690
Rated insulation voltage Ui(V)	800	800	800	800	800
Rated impulse withstand voltage Uimp(kV)	8	8	8	8	8
Utilisation category	A	A	A	A	A
Rated ultimate short-circuit breaking capacity Icu(kA)	AC 220/240V	65	65	65	65
	AC 380/415V	40	40	40	40
	AC 690V	8	12	12	12
Rated short-circuit service breaking capacity Ics(kA)	AC 220/240V	65	65	65	65
	AC 380/415V	40	40	40	40
	AC 690V	4	6	6	6

Thermomagnetic
 T(thermal)
 M(magnetic)

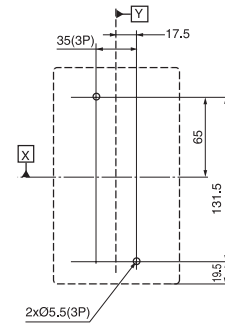
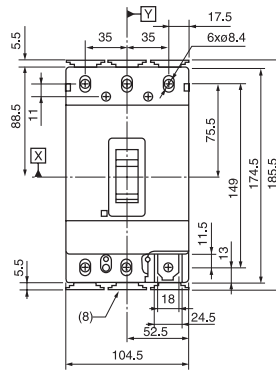
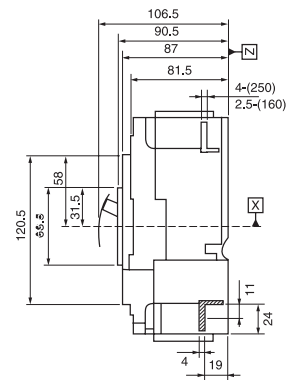
AM8-160X			AM8-160			AM8-250		
In	T adjustable (0.8~1.0In)	M fixed	In	T adjustable (0.8~1.0In)	M adjustable	In	T adjustable (0.8~1.0In)	M adjustable
20A	16~20A	300A	50A	40~50A	300~600A	200A	160~200A	1000~2000A
32A	25~32A	300A	63A	50~63A	300~600A	250A	200~250A	1200~2500A
40A	32~40A	600A	80A	63~80A	400~800A			
50A	40~50A	600A	100A	80~100A	500~1000A			
63A	50~63A	600A	125A	100~125A	625~1250A			
80A	63~80A	1000A	160A	125~160A	800~1600A			
100A	80~100A	1000A						
125A	100~125A	1000A						
160A	125~160A	1500A						

AM8-400			AM8-630		
In	T adjustable(0.8~1.0In)	M adjustable	In	T adjustable(0.8~1.0In)	M adjustable
200A	160~200A	1000~2000A	315A	250~315A	1575~3150A
250A	200~250A	1200~2500A	400A	315~400A	2000~4000A
315A	250~315A	1575~3150A	500A	400~500A	2500~5000A
400A	315~400A	2000~4000A	630A	500~630A	3250~6500A

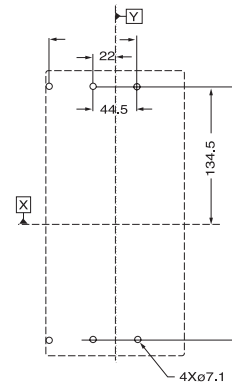
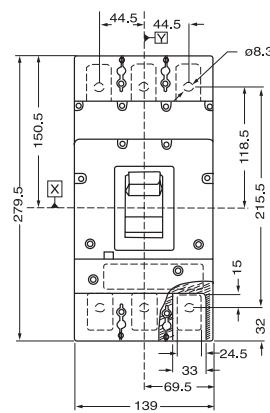
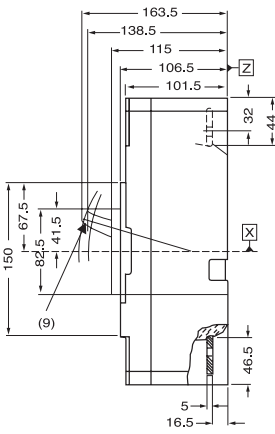
3. Outline and Installation Dimension



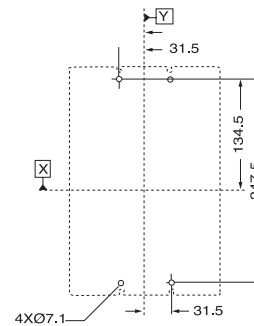
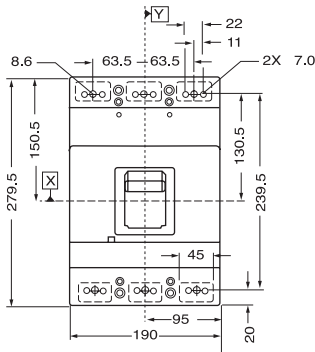
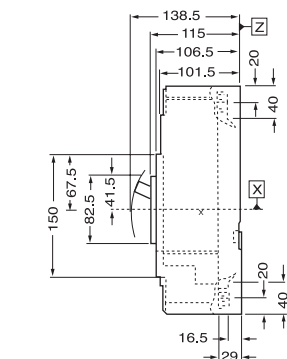
AM8-160X



AM8-250



AM8-400



AM8-630